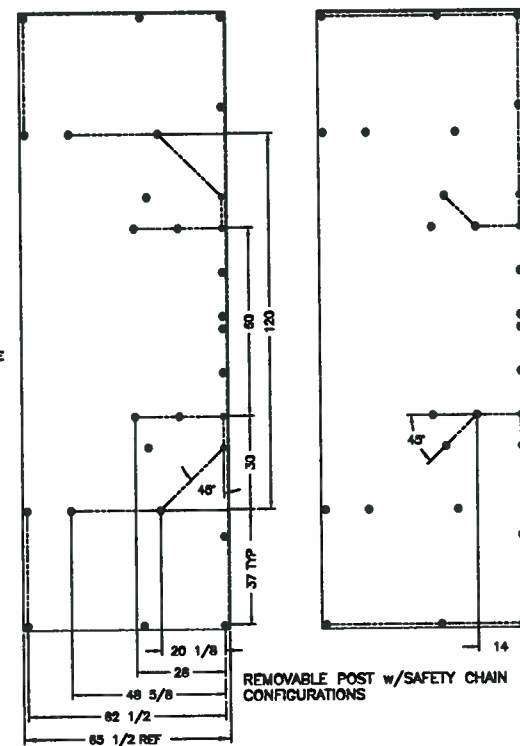
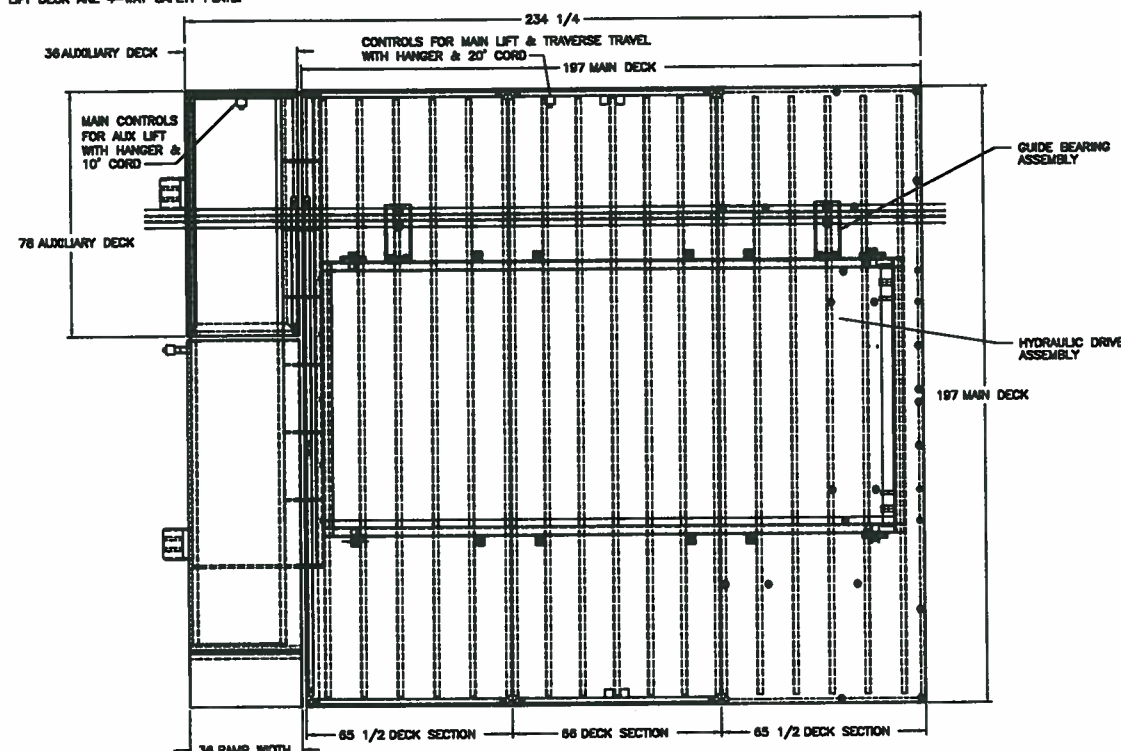


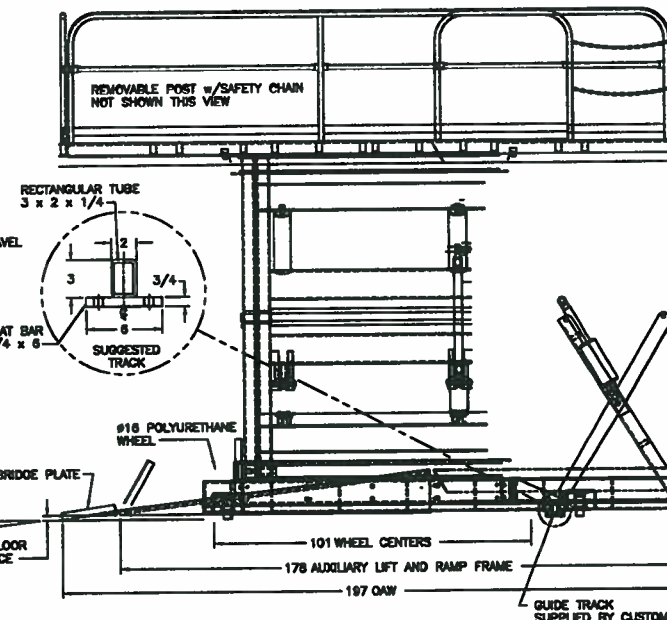
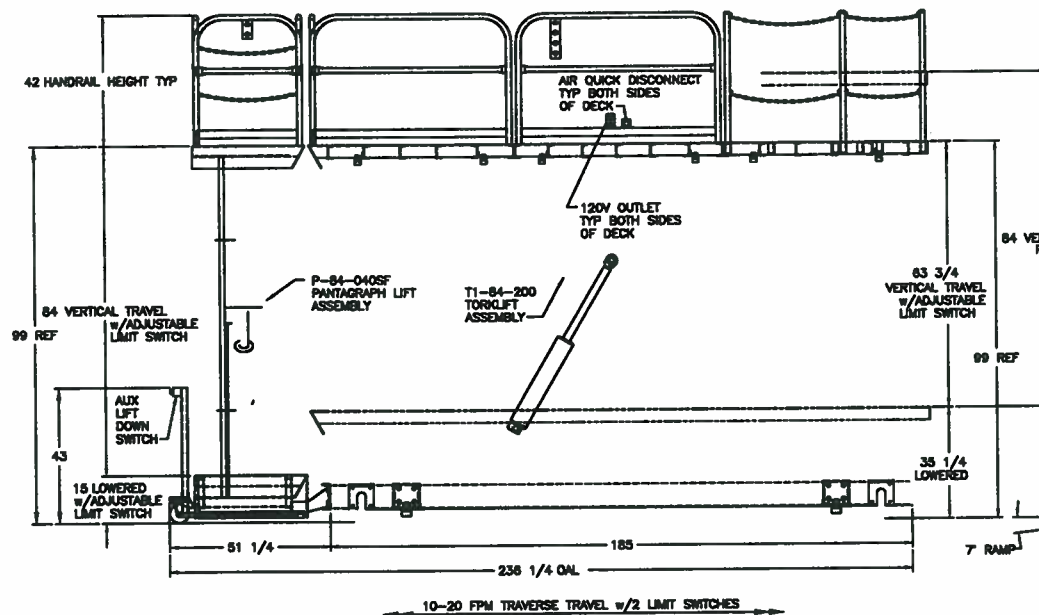
NOTES, UNLESS OTHERWISE SPECIFIED:

1. WARNING ALARM TO SOUND WHEN UNIT IS IN VERTICAL OR HORIZONTAL MOTION.
2. UNIT TO BE PAINTED OSHA SAFETY YELLOW.
3. POLYURETHANE WHEELS AND AXLES SHIPPED SEPARATELY.
4. DECK SEAMS TO BE WELDED CLOSED ON CUSTOMERS SITE.
5. DECK TO SHIP IN (3) SECTIONS.
6. MAIN LIFT FRAME SHIPS SEPARATE FROM AUXILIARY LIFT/RAMP ASSEMBLY.
7. GUIDE BEARING ASSEMBLY SHIPS SEPARATE FROM MAIN LIFT FRAME.
8. MAIN DECK IS SMOOTH STEEL PLATE, RAMP AND AUXILIARY LIFT DECK ARE 4-WAY SAFETY PLATE.



SPECIFICATIONS: MAIN LIFT
CAPACITY: 10,000 LB
UP TIME (APPROX): 180 SEC
DN TIME (APPROX): 180 SEC
PUMP (INTERNAL): 3HP, 3ph/60Hz/230-480V AC
CONTROLS: PUSHBUTTON WITH HANDRAIL HANGER AND 20' CORD

AUXILIARY LIFT



GEMINI PROJECT DOCUMENT
APPROVED FOR RELEASE
Group Manager: *[Signature]*
Systems: *[Signature]* 10/14/99

REV	DESCRIPTION	DATE	APPROVED
A	INITIAL RELEASE	15 JSEP 97	

REV	QTY	REV NO.	PART OR IDENTIFYING NUMBER	NOMENCLATURE OR DESCRIPTION	PROCUREMENT SPECIFICATION	NOTES
1						
2						
3						
4						
5						
6						
7						
8						
9						
10						
11						
12						
13						
14						
15						
16						
17						
18						
19						
20						
21						
22						
23						
24						
25						
26						
27						
28						
29						
30						
31						
32						
33						
34						
35						
36						
37						
38						
39						
40						
41						
42						
43						
44						
45						
46						
47						
48						
49						
50						
51						
52						
53						
54						
55						
56						
57						
58						
59						
60						
61						
62						
63						
64						
65						
66						
67						
68						
69						
70						
71						
72						
73						
74						
75						
76						
77						
78						
79						
80						
81						
82						
83						
84						
85						
86						
87						
88						
89						
90						
91						
92						
93						
94						
95						
96						
97						
98						
99						
100						