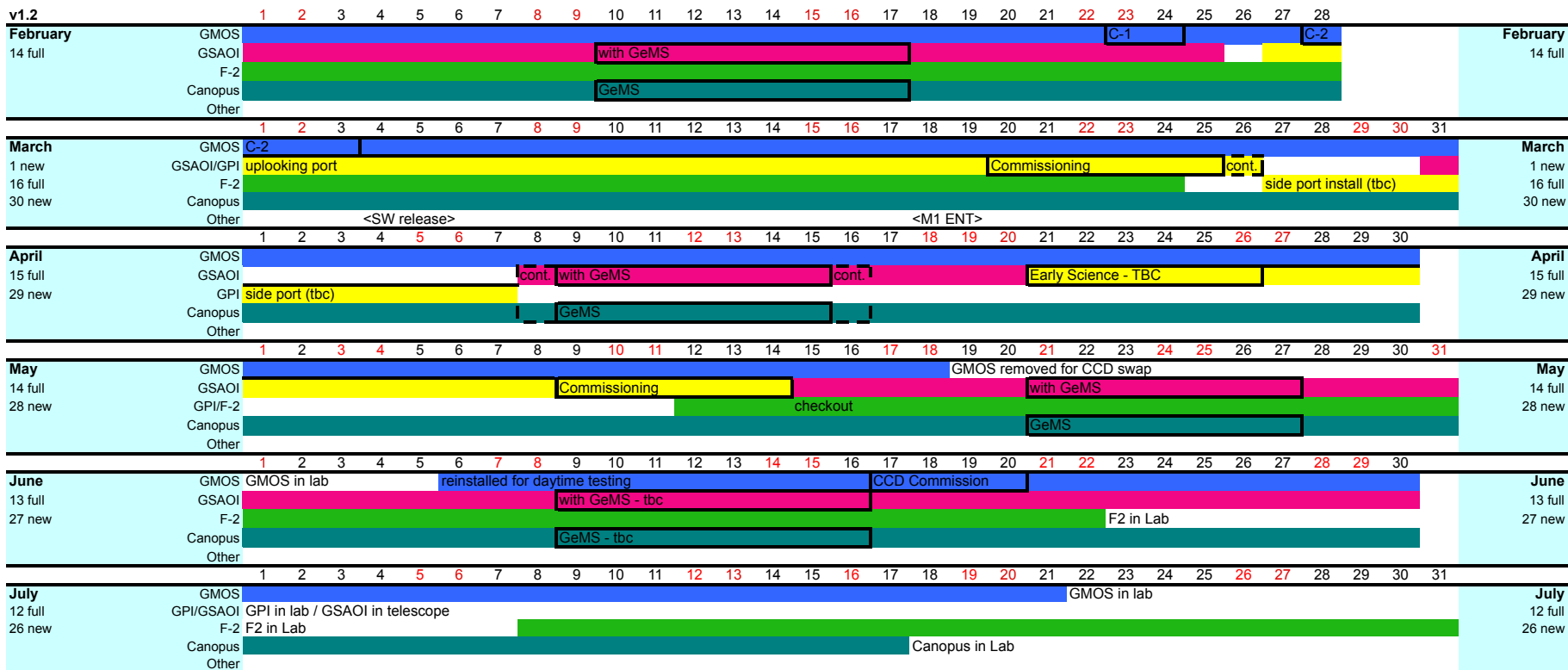


Gemini South Semester 2014A

The semester calendar shows multi-instrument queue nights, scheduled classical runs and engineering or commissioning blocks. Instruments potentially usable on queue nights are indicated by the colored-horizontal bands (see color key below). Note: ToO PIs should always check the "what's available now" pages that are linked from the contents list for the most up-to-date information. Scheduled classical runs are indicated by the last characters of the program ID, e.g., "C-1". Engineering or commissioning blocks are shown across all rows as no queue execution is expected those nights. New and full moon dates are shown on the left.



Notes:
 Instrument change dates are flexible and subject to change.
 GSAOI is available for use only during Laser nights; the June GeMS run is tentative and will depend on weather and queue status at that time
 GPI is available for commissioning and early science during indicated blocks only; early science is contingent on March commissioning results
 GPI commissioning runs will have queue backup; GeMS runs also are multi-instrument queue

23-jul, R. Rutten - updated GMOS, F2, Canopus availability
 10-jun, AJA - moved CCD commissioning nights to 17-Jun