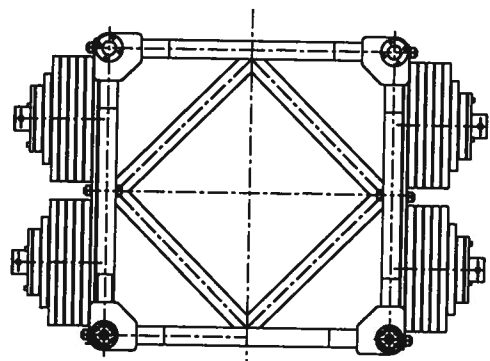
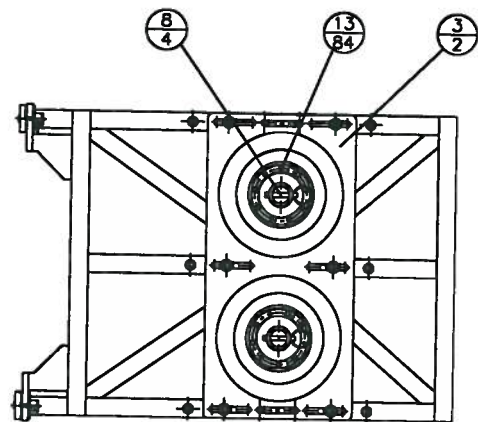
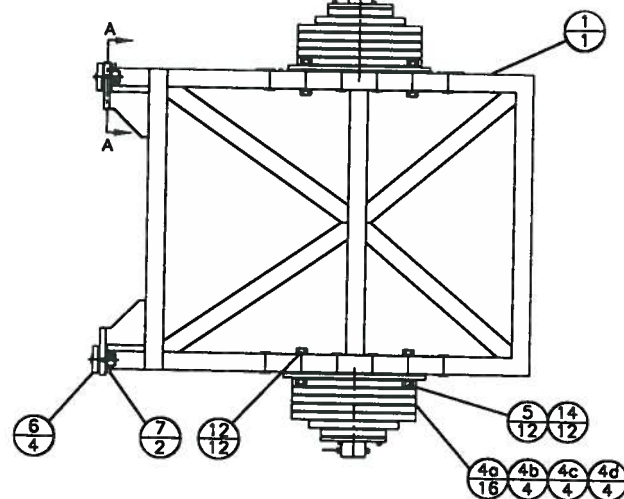
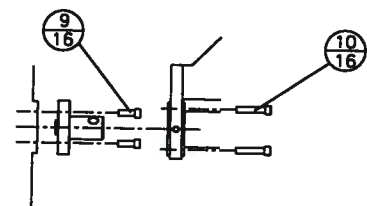


Typ. ISS/Support structure fastener detail x2



Mass Table

Item	Description	Drawing/Description	Qty.	Mass/item	Mass
1	Ballast weight support structure	89-GP-1000-4002	1	578	578
2	Hardened insert	89-GP-1000-4003	3	negligible	0
3	Ballast weight baseplate(Type1)	89-GP-1000-4004	2	210	420
4	Ballast weight (50 Kg.)	89-GP-1000-4005	16	50	800
	Ballast weight (25 Kg.)		4	25	100
	Ballast weight (12.5 Kg.)		4	12.5	50
	Ballast weight (6.25 Kg.)		4	6.25	25
5	Baseplate washer	89-GP-1000-4006	12	0.07	0.84
6	ISS locating pin	89-GP-1000-4007	4	2.8	11.2
7	Support structure retaining pin	ø19 x 50 grip SS	2	0.11	0.22
	self locking pins				
8	Ballast weight retaining pin	ø19 x 100 grip SS	4	0.22	0.88
	self locking pins				
9	ISS locating pin cap screws	M12 x 35	16	0.03	0.48
10	Support structure cap screws	M12 x 60	16	0.054	0.86
11	Support structure set screw	M12 x 30 flat point	1	0.026	0.026
12	Baseplate mounting bolts	M24 x 170, 40	12	0.6	7.2
	threaded				
13	Ballast weight cap screws	M12 x 50	84	0.05	4.2
14	Baseplate Nuts	M12	12	negligible	0
	Total mass				1998.9

GEMINI PROJECT DOCUMENT  
APPROVED FOR RELEASE