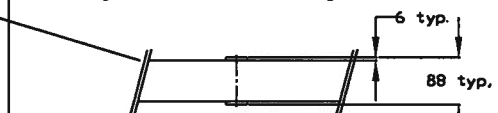
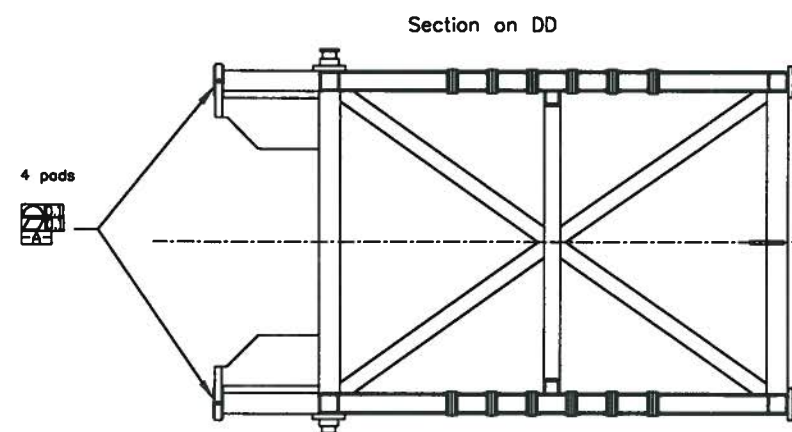
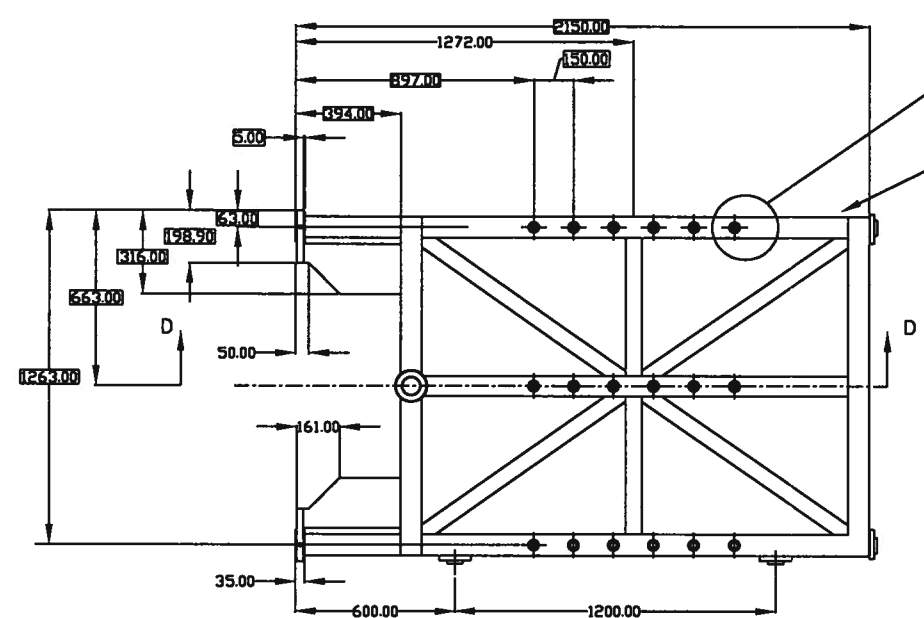
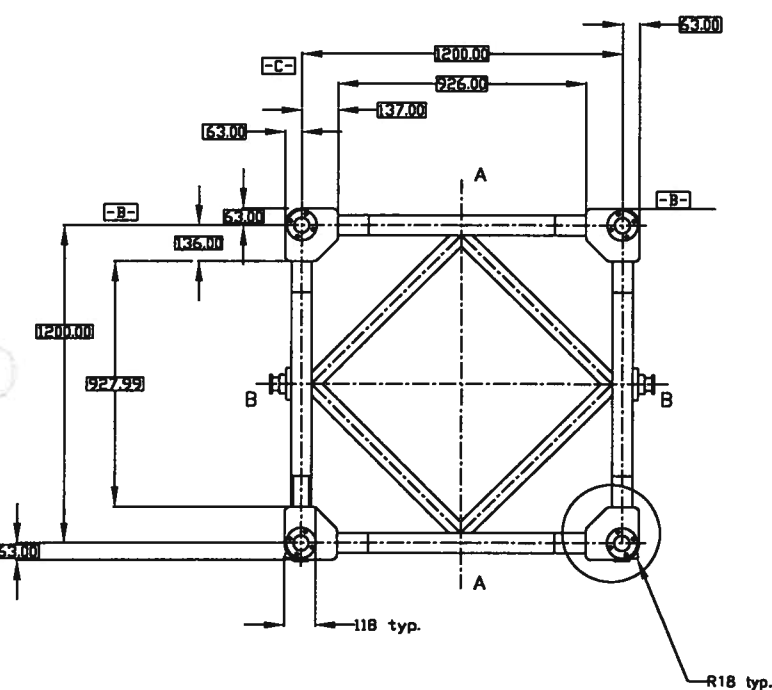
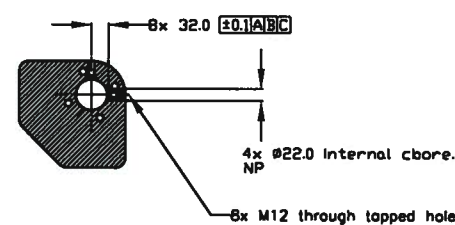
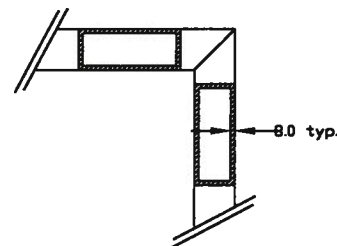
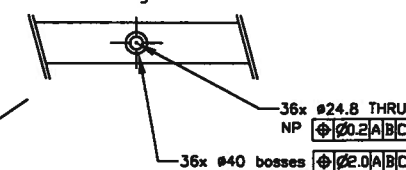


Port section on CC x 2

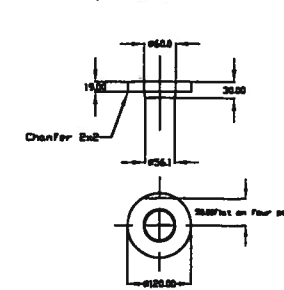
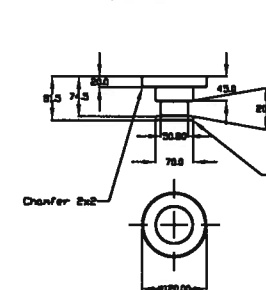
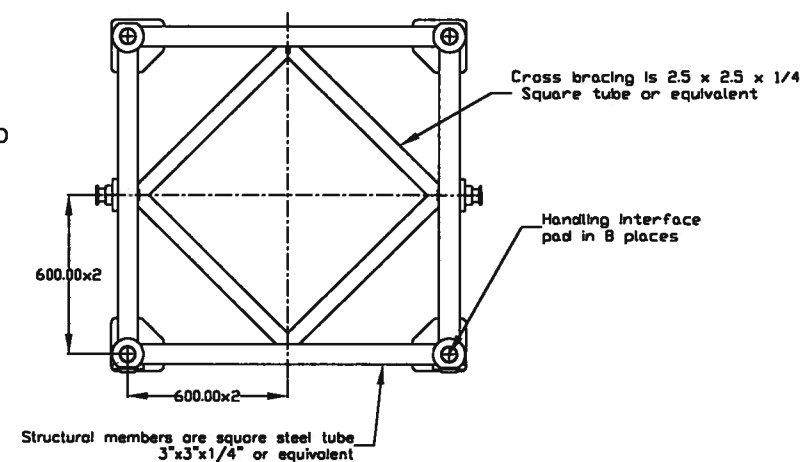
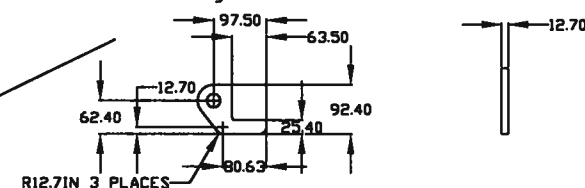
Port section on EE x 2



Cross bracing is 2.5 x 2.5 x 1/4
Square tube or equivalent



Lifting bracket detail 2:1



Finish point all surfaces as described in workscope masking all topped holes, machined holes and surfaces marked 'NP'. These surfaces must be protected by a thin film lubricant.

Note2. General tolerance on fabrication dimensions is ± 3

note4. Material is structural mild steel

Note5. Mass estimate 578 Kg. (see sheet 2)

GEMINI PROJECT DOCUMENT
APPROVED FOR RELEASE

[illegible]